

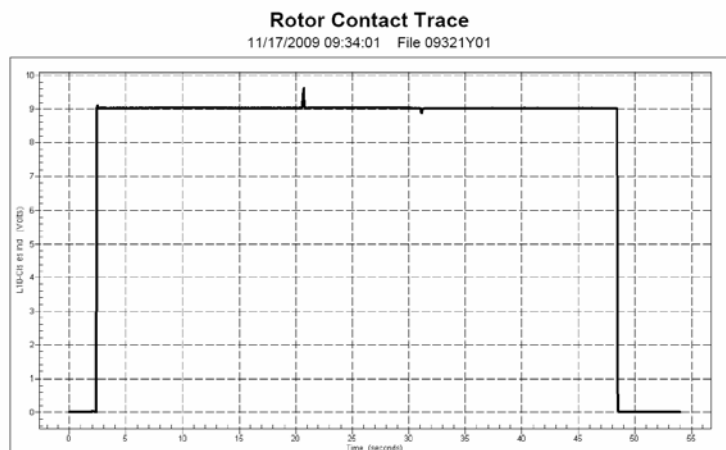
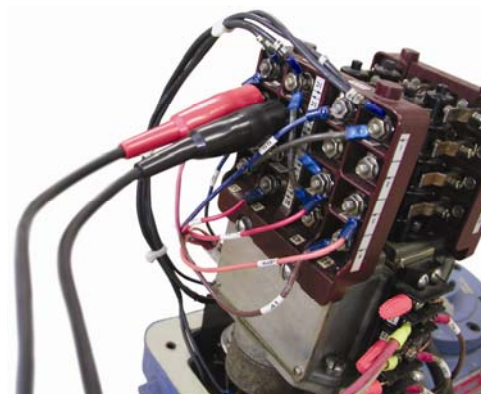
Rotor Contact Indicator (RCI)

Teledyne Test Services' Rotor Contact Indicator (RCI) provides the valve tester with a means to monitor unpowered circuits (dry contacts) such as computer points and interlocks as well as assisting with adjustments of critical limit switch settings such as closed torque switch bypass. The RCI provides a usable signal for input to the QUIKLOOK II Data Acquisition Systems.



Features

- Alligator clip connection for easy attachment
- 0V output for open circuit, 9V output upon closure
- Adapts to standard Teledyne QUIKLOOK II cable set
- Fused connections for safe operation of QUIKLOOK II
- No excitation required



QUIKLOOK II 2008.331
MRNENPC18.dbrval

Page 1 of 1
2/16/2010 9:31:11 AM

The **Rotor Contact Indicator** (P/N 160009) is used with QUIKLOOK II or QL II+ Systems and connects directly to the QUIKLOOK cable set.